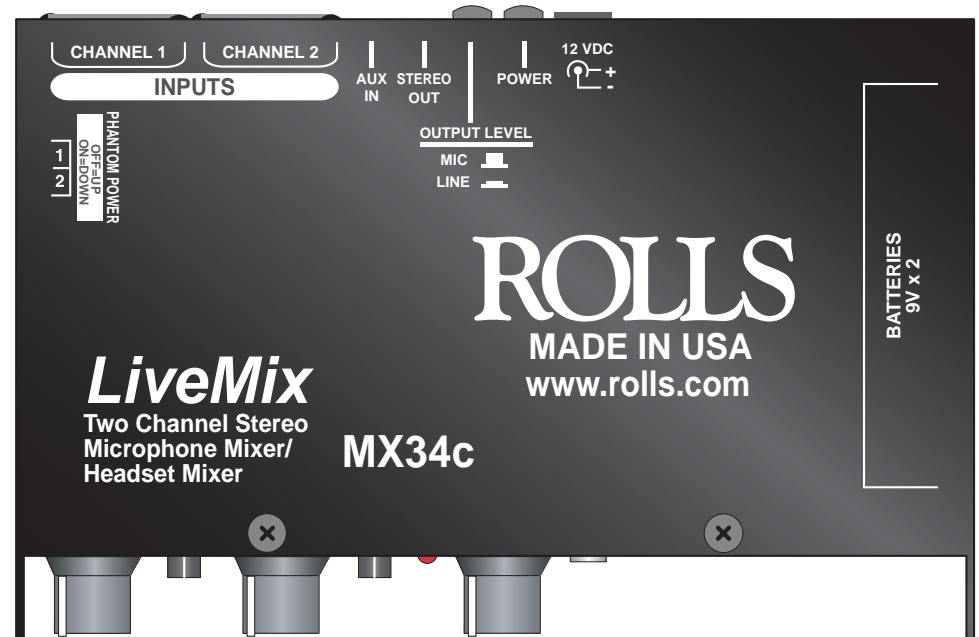


For warranty registration please visit the rolls web site at www.rolls.com.

ROLLS

MX34c LiveMix



Thank you for purchasing the new MX34c LiveMix - two channel microphone mixer. Although having many uses, this little mixer was originally designed with the video camera operator in mind. It's handy shoulder strap, easy-access microphone Level and Pan controls, and smart Input/Output jack placement make the MX34c ideal for the live recording enthusiast. Two 9 volt alkaline batteries ensure adequate signal strength as well as phantom power for your favorite condenser microphone.

Please review this manual carefully as it contains important information regarding the proper use of this product.

INSPECTION

1. Unpack and Inspect the MX34c package

Your MX34c was carefully packed at the factory in a protective carton. Nonetheless, be sure to examine the unit and the carton for any signs of damage that may have occurred during shipping. If obvious physical damage is noticed, contact the carrier immediately to make a damage claim. We suggest saving the shipping carton and packing materials for safely transporting the unit in the future.

2. Please visit our web site at www.rolls.com, click on the Register Your Warranty Here text and follow the instructions to register your MX34c.

TABLE OF CONTENTS

INTRODUCTION	1
INSPECTION	1
TABLE OF CONTENTS	1
DESCRIPTION	2
Front Panel	
Rear Panel	
Battery Installation	
Phantom Power	
CONNECTION	3
A note on wiring a mono signal to the stereo AUX IN	
OPERATION	4
SCHEMATIC	5
SPECIFICATIONS	6
WARRANTY	BACK COVER

Input Impedance: mic - 600 Ohms or greater XLR
 aux - 47K stereo 3.5mm

Output Impedance: 50 Ohms

THD + Noise: .02%

S/N Ratio: 110 dB

Frequency Response: 20 Hz - 30 kHz (+0 / -1 dB)

Max Output Level: + 14 dB

Max Input Level: +20 dB

Max Gain: +70 dB

Batteries: 2 X 9V Alkaline

Current Draw: 30 mA

Phantom Power: +18 VDC

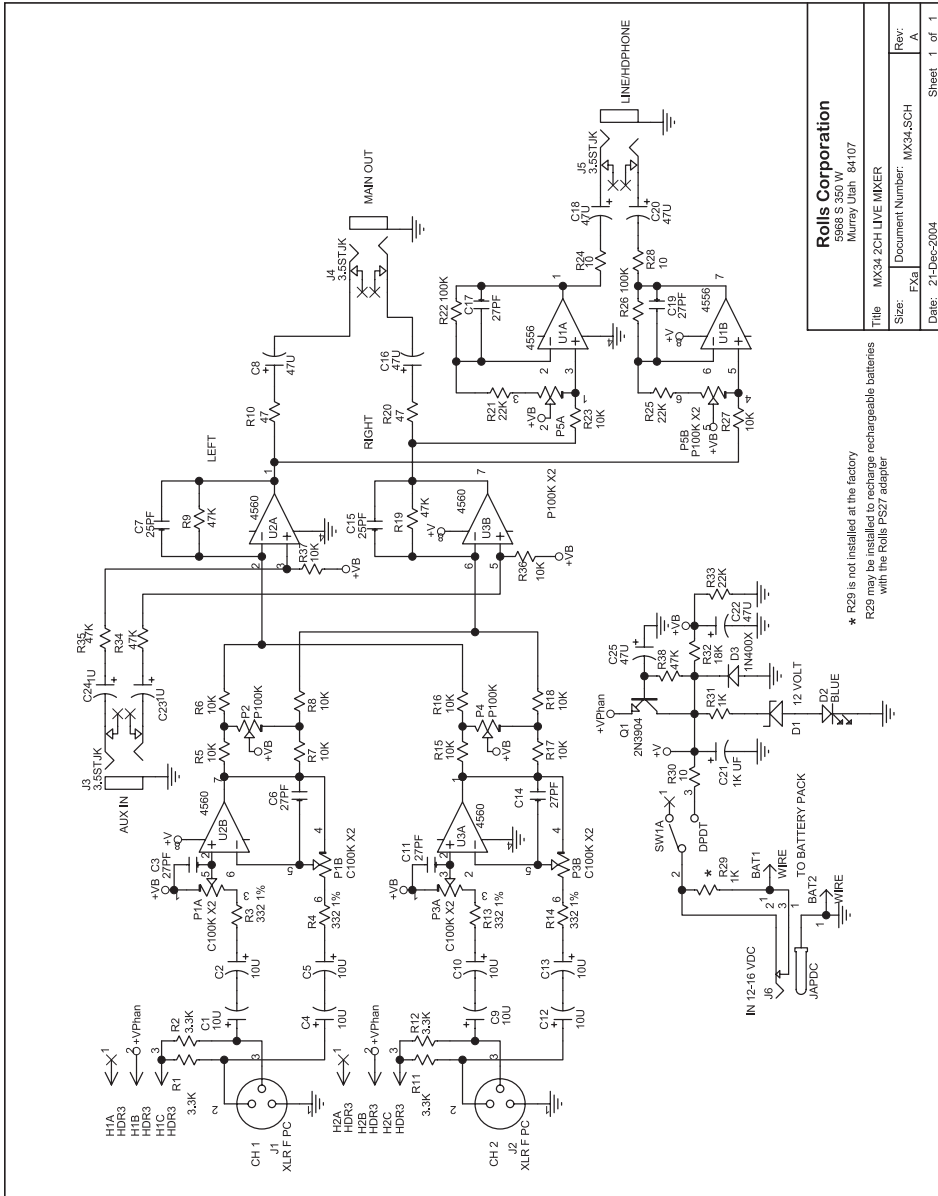
Input Connectors: 2 Female XLR, 1/8" (3.5mm)

DC Power Jack: (5.5 X 2.1 mm tip negative)

Output connectors: 3.5mm stereo main out
 3.5mm Headphone

Size: 6.3"w x 3.7"d x 1.4" h

Weight: 1 lbs.



Rolls Corporation
 5988 S 350 W
 Murray Utah 84107
 Title: MX34 2CH LIVE MIXER
 Size: EX3
 Document Number: MX34.SCH
 Date: 21-Dec-2004
 Rev: A
 Sheet: 1 of 1

FRONT PANEL



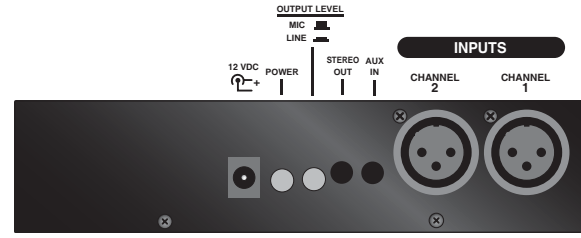
MIC1 and MIC2

LEVEL: Adjusts the amount of signal of the indicated Microphone channel.
PAN: Adjusts the relative level of signal from the channel to the Right/Left Output.
pwr: When lit, indicates that the MX34c is on. A dim light indicates low battery voltage.

HEADPHONE

LEVEL: Adjusts the amount of signal from the Headphone Output.
OUTPUT: 1/8" (3.5mm) jack containing the Headphone Output signal.

REAR PANEL



INPUTS: 1 - 2: XLR balanced inputs for connection to any standard dynamic or condenser microphone. The input circuitry has a very wide input range and can accommodate almost any (mic to line) level signal.

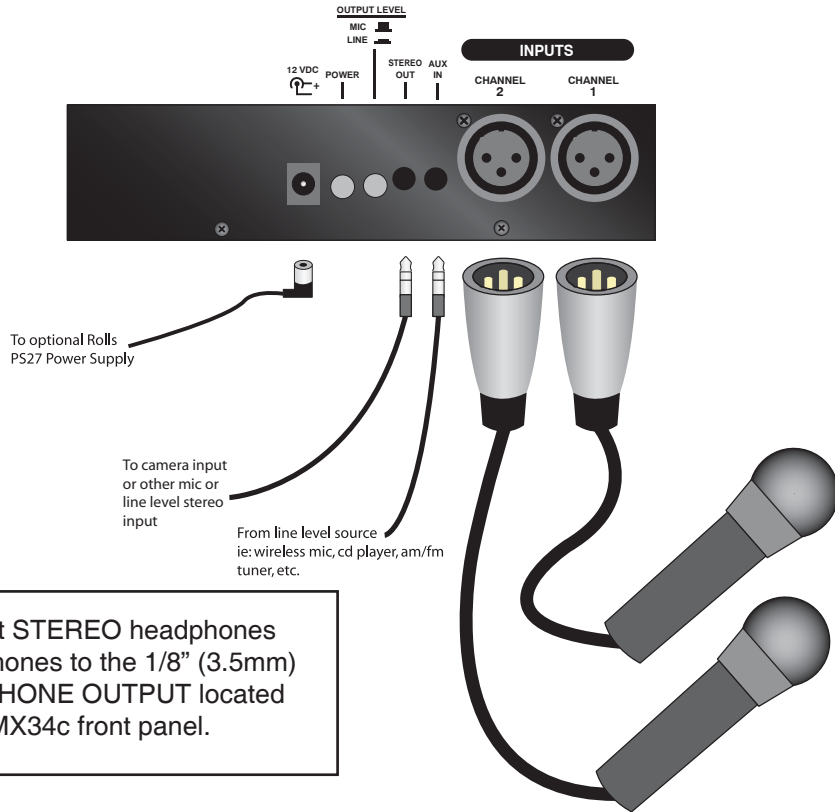
AUX IN: Tip-Ring-Sleeve stereo 1/8" (3.5mm) jack for connecting to another line-level stereo signal source.
STEREO OUT: Tip-Ring-Sleeve stereo 1/8" (3.5mm) jack for connection to a camera or other stereo input.
MIC/LINE OUTPUT LEVEL: Button for switching the stereo output level to MIC or LINE. Follow the silk screening of the unit for switch orientation.
POWER: Button applies power to the MX34c.
12 VDC jack: For connection to the Rolls PS27 12VDC power supply.



BATTERY INSTALLATION: To replace the 9 V alkaline batteries, first carefully press in and up on the door to release the battery compartment. It then slides out and you can replace the battery. Remember to replace **both** batteries at the same time.

PHANTOM POWER: Follow the silk screening of the MX34c to activate phantom power to the input XLR's.

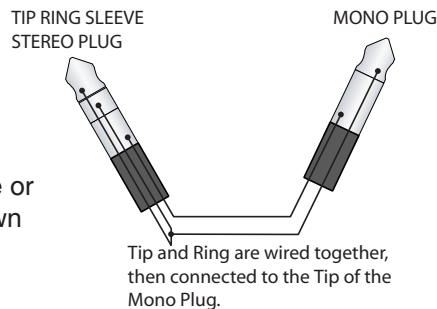
Connect microphones to the MX34c via balanced XLR cables.
Stereo auxiliary sources such as the output from another mixer, AM/FM tuners, CD Players, and MP3 players may be connected to the AUX IN via a stereo 1/8" (3.5mm) Tip-Ring-Sleeve plug.
Connect the STEREO OUT to the Input of your recording device also using a stereo 1/8" (3.5mm) Tip-Ring-Sleeve plug.
If you wish to use AC power for the MX34c, connect the Rolls PS27 12VDC power supply.



NOTE: ON CONNECTING A WIRELESS MIC TO THE AUX INPUT

DO NOT CONNECT A MONO PLUG TO THE AUX IN OR STEREO OUTPUT. DOING SO WILL RESULT IN SIGNAL LOSS OR DAMAGE TO THE MX34c.

If you need to connect a MONO signal (like the output of a wireless microphone) to the AUX IN of the MX34c, you will need to make or purchase a MONO TO STEREO cable. Shown here is a diagram of this cable's wiring.



Once your MX34c is properly connected, apply power by pressing in the POWER button on the rear panel. The blue **pwr** LED on the front panel should light.

If you are using condenser type microphones, apply the phantom power to the desired channels. Test the microphone levels by speaking into the microphones at a normal operating volume, and adjust the Mic Level controls until you achieve desired levels. Adjust each Pan control to place the signal in the stereo field.

Adjust the Headphone Level control for a comfortable listening volume.

For best results, we recommend recording a couple of test runs to ensure you have proper levels set.



When the signal becomes weak and distorted, or the **pwr** LED dims, the batteries will need replacing. See page 2; Battery Installation for details.